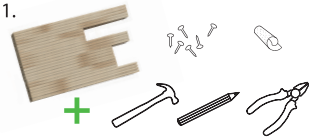


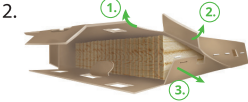
ASSEMBLY MANUAL FOR "DIY PROFESSIONAL" WOODEN BOX

SET VISUALIZATION



The set contains: planks, nails, sandpaper. To assembly cetrain box model you need a hammer, a pencil and pliers.

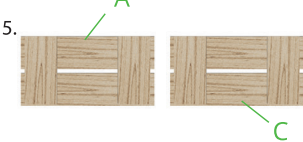
BOX OPENING



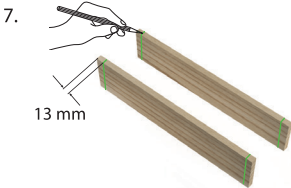
Our product is nature friendly. Instead of harmful glue we use staples. It fastens package to the first plank.

1. Open a cardboard lock.
2. Tear off stapled side of package.

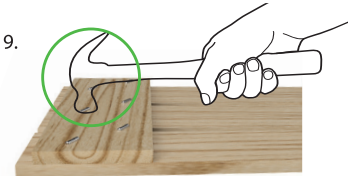
EDGES



Now we are going to assembly box edges. Take "A" and "C" planks.



Mark all the "A" planks. Do not forget to put marks on short sides. "C" planks are aligned to that line. Lay out planks as it is shown on the 3rd image.



Turn the edge upside down and bend the nails.

SIDES AND BOTTOM

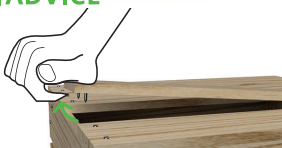


Nail the planks together, starting with the sides. Carefully set the same distance between the boards. For each plank use two nails.



Lastly, nail the bottom of the box to the the sides. Carefully set the same distance between the boards. For each plank use two nails.

! ADVICE

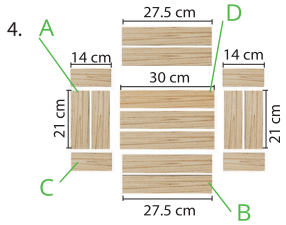


If the nail goes in at an angle, it can be fixed easily.

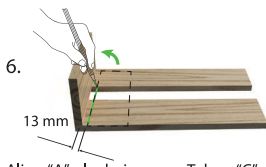
1. Rip out the plank with the nail.
2. Bend the nail at the correct angle.
3. Nail it back in.



It is possible that staples may get stuck in the plank. In that case you need to extract them by using pliers.

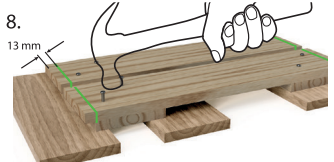


Sort the planks by groups.
Longest planks - box bottom (D).
Shortest planks - inside of box (C).
Medium planks - box sides (A and B).



Align "A" planks in a row. Take a "C" plank and put vertically on "A" planks, align to the side. Draw a line with a pencil in 13 mm distance from "A" plank edge.

Attention! This distance is equal to the plank's thickness.



1. Take the nails and a hammer.
2. Hammer the nails until halfway.
3. Place wooden planks on the bottom, so that the nails do not pierce the work surface.
4. Hammer the nails until the end. For each plank use two nails.



Our specialists ensure that this is the best option to make sure that the box is firm and stable, not letting it to break apart even under extreme pressure.



Go on to the opposite side. Carefully set the same distance between the boards. For each plank use two nails.

FINISHED BOX



Smoother the sharp edges with the provided sand paper. The box is finished!

! ADVICE



You can use screws to make the box even stronger.

Screws are not included!